

A*CENSUS

Diversity Report

SAA 2005

New Orleans

Figure 1

Self Definition of Race/Ethnicity

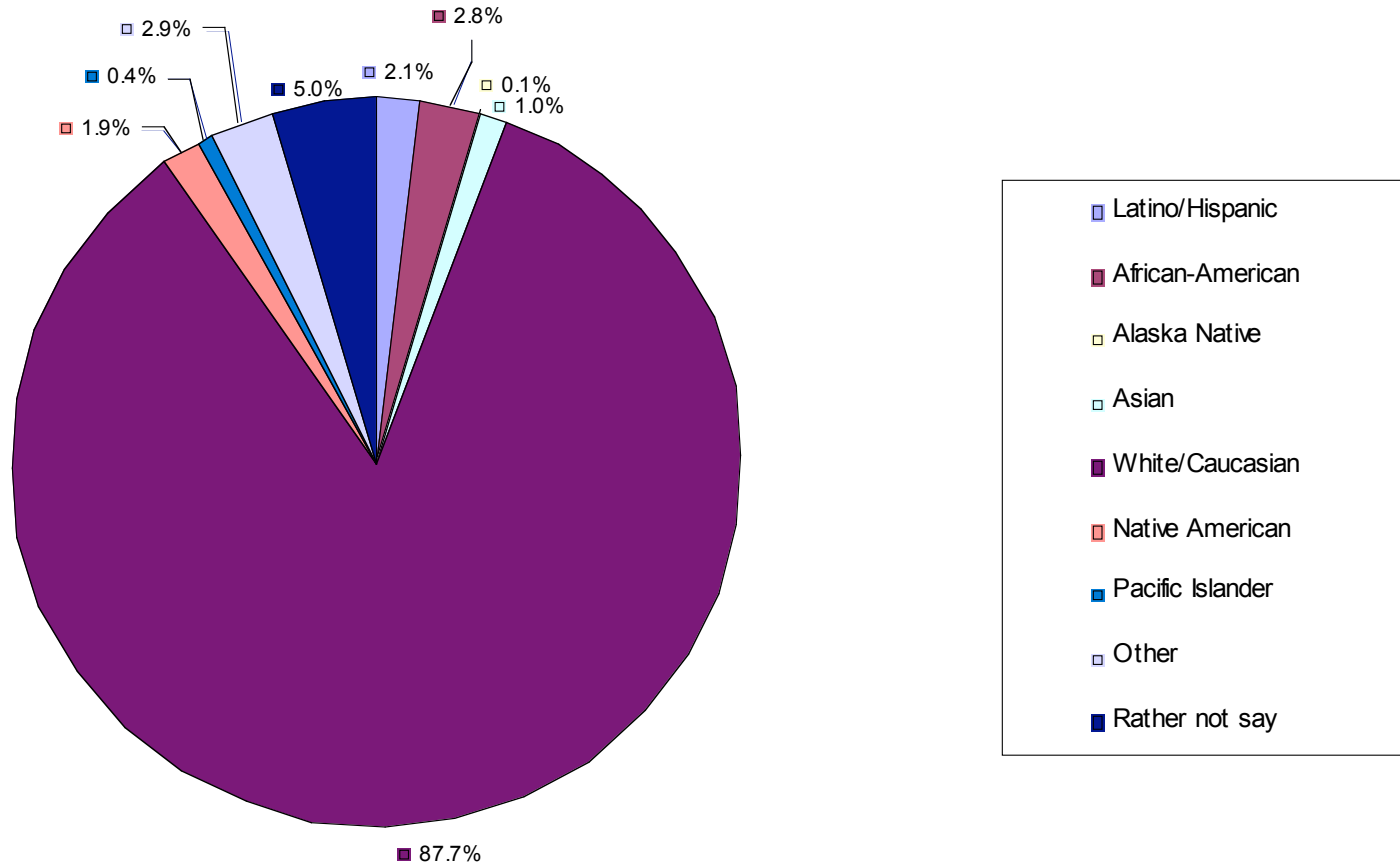


Figure 1A

Self Definition of Race/Ethnicity

Q3 (Latino/Hispanic) and Q3a (racial groups) All Respondents (n=5133)			Bearman	
	2004		1982	
Ethnicity and Racial Groups	Count	Percent		
Latino/Hispanic	108	2.1%		
African-American	144	2.8%		1.8%
Alaska Native	5	0.1%		
Asian	52	1.0%		
White/Caucasian	4,504	87.7%		
Native American	97	1.9%		
Pacific Islander	19	0.4%		
Other	147	2.9%		
Total non-Latino and Non-White	392	7.6%	45	2.8%

Figure 2

How Respondents Entered Archival Career

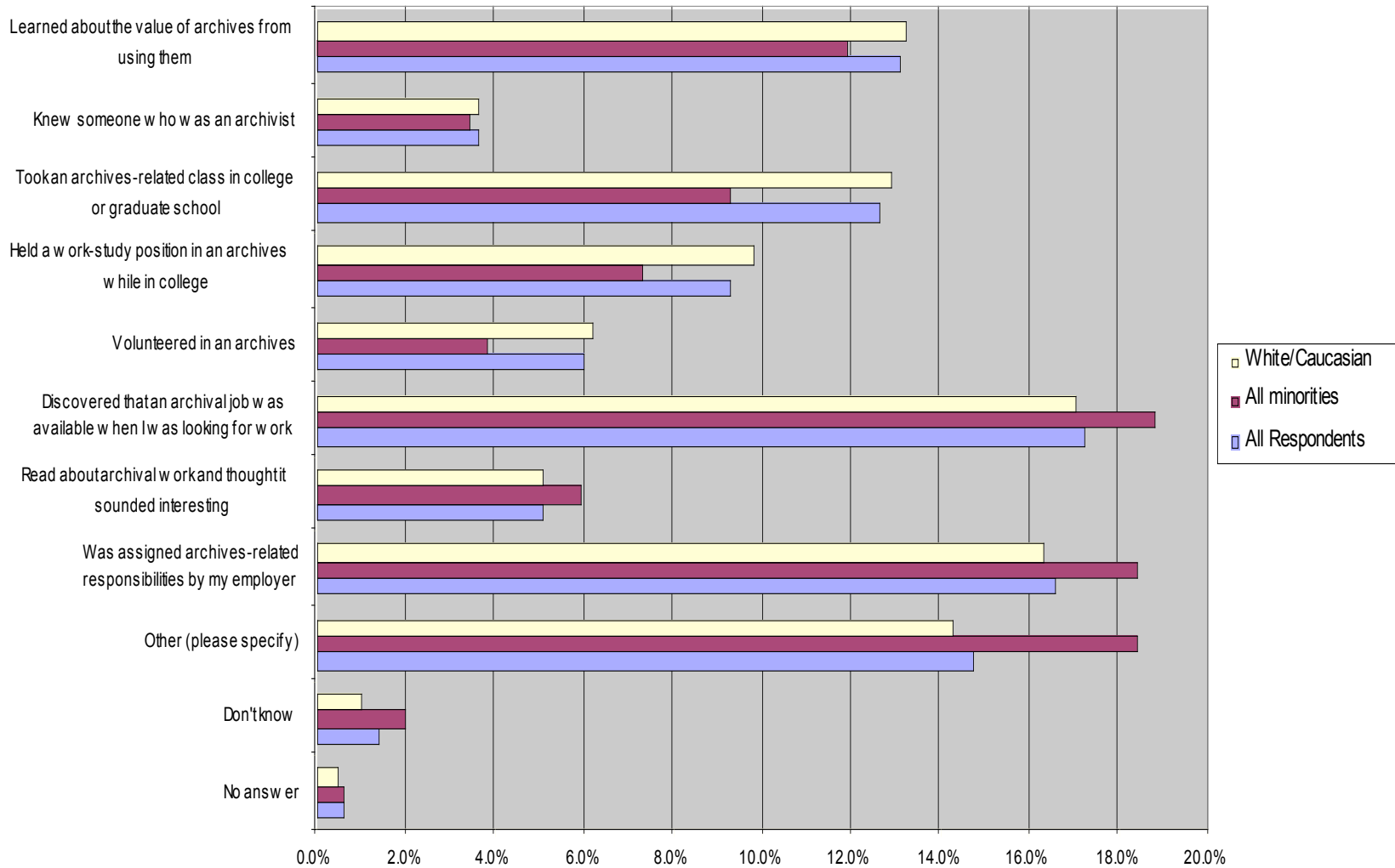


Figure 2A**How Respondents Entered Archival Career**

	All Respondents	All minorities	White/Caucasian
No answer	0.6%	0.6%	0.5%
Don't know	1.4%	2.0%	1.0%
Other (please specify)	14.7%	18.4%	14.3%
Was assigned archives-related responsibilities by my employer	16.6%	18.4%	16.3%
Read about archival work and thought it sounded interesting	5.1%	5.9%	5.1%
Discovered that an archival job was available when I was looking for work	17.2%	18.8%	17.0%
Volunteered in an archives	6.0%	3.8%	6.2%
Held a work-study position in an archives while in college	9.3%	7.3%	9.8%
Took an archives-related class in college or graduate school	12.6%	9.3%	12.9%
Knew someone who was an archivist	3.6%	3.4%	3.6%
Learned about the value of archives from using them	13.1%	11.9%	13.2%
Total	66.9%	60.4%	67.8%

Archives First Career

Figure 3

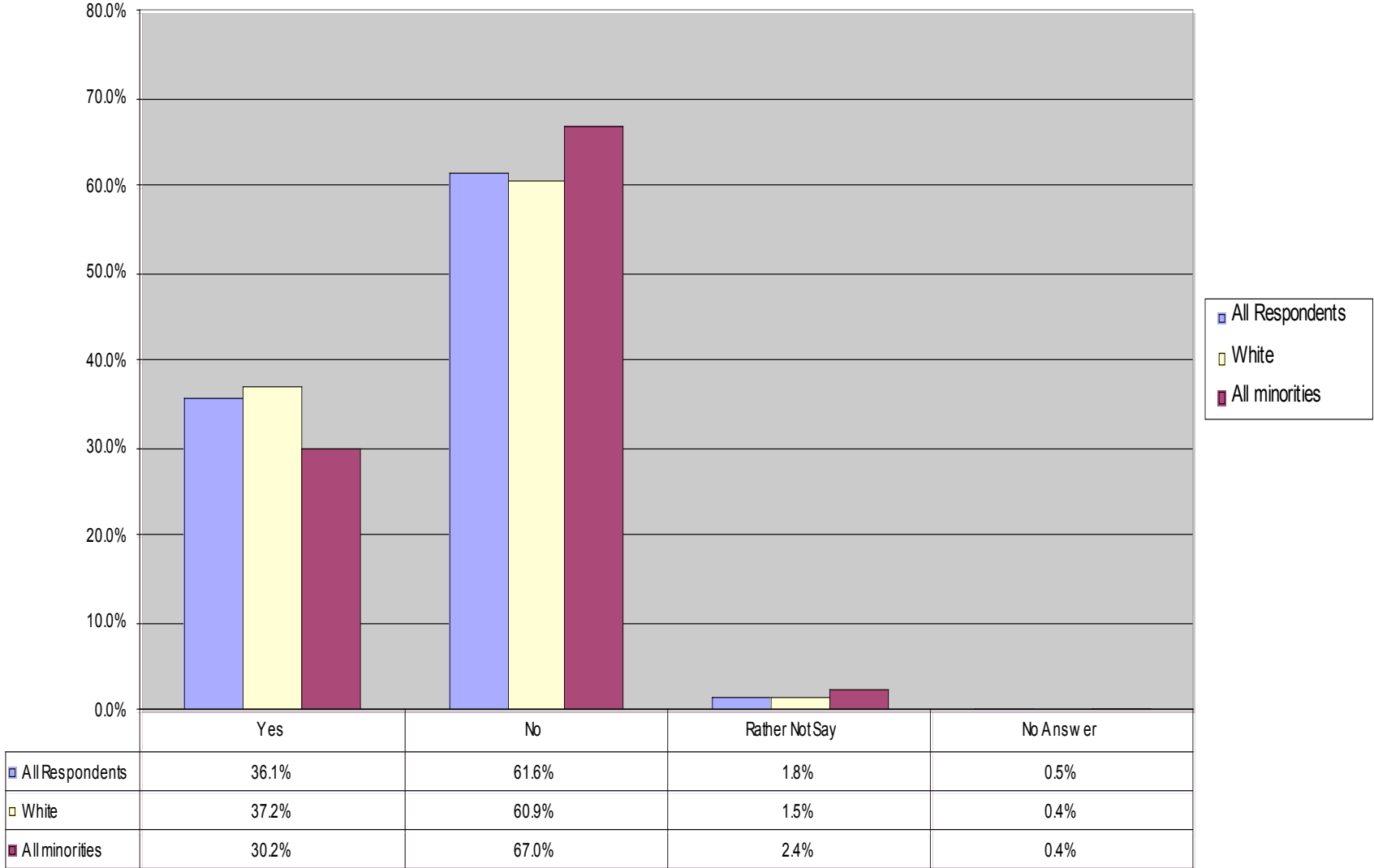
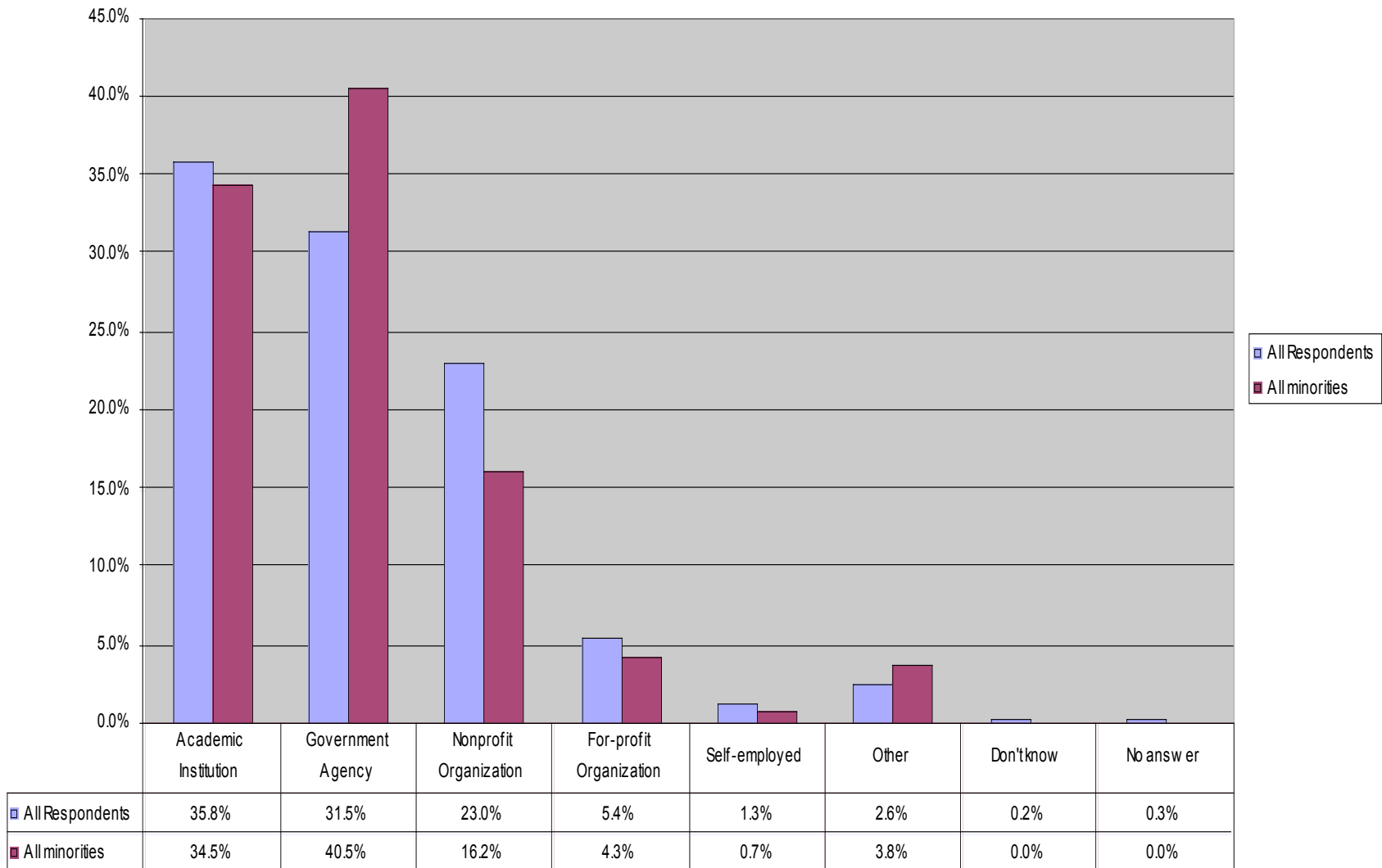


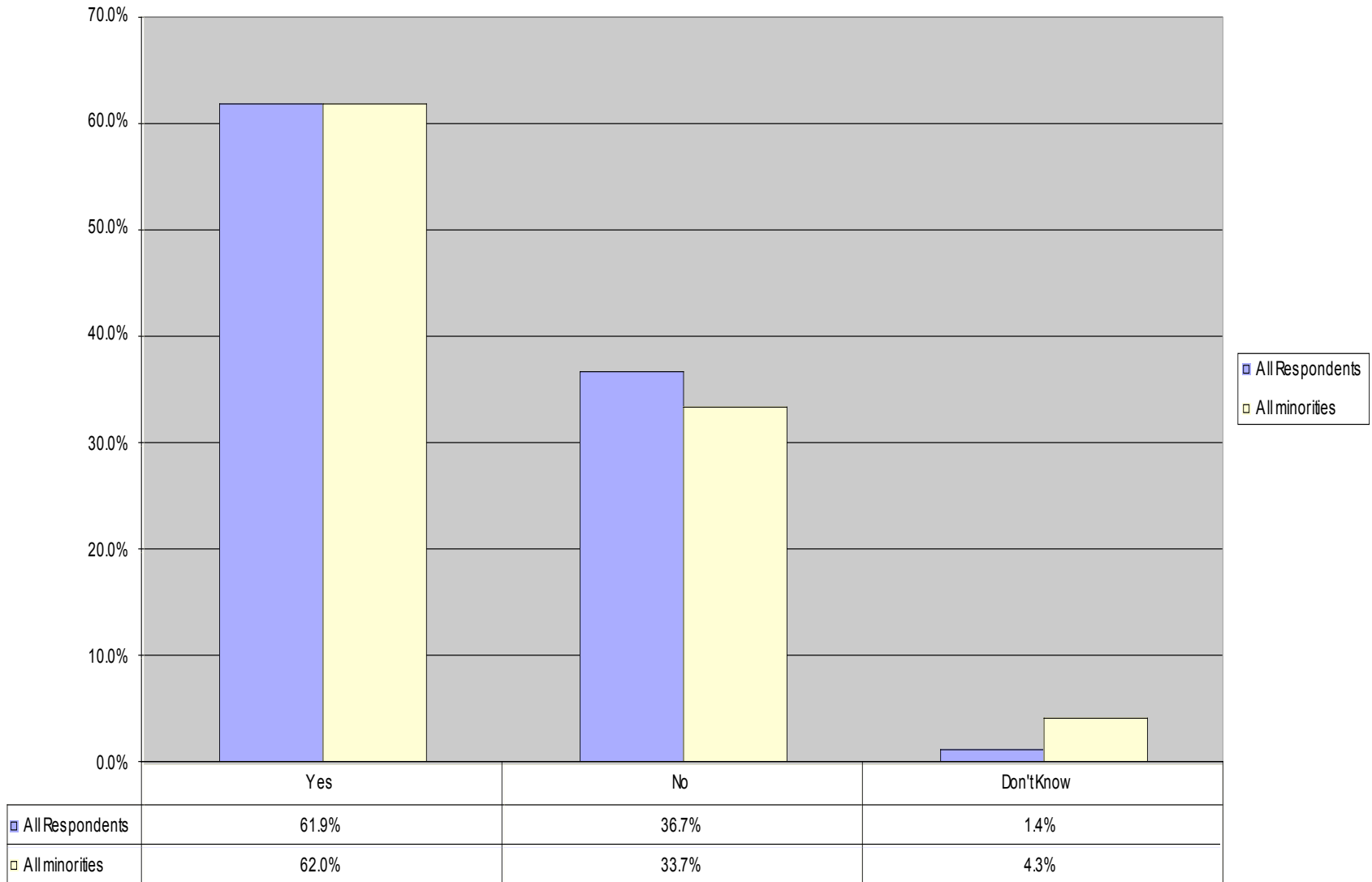
Figure 4

Types of Institutions



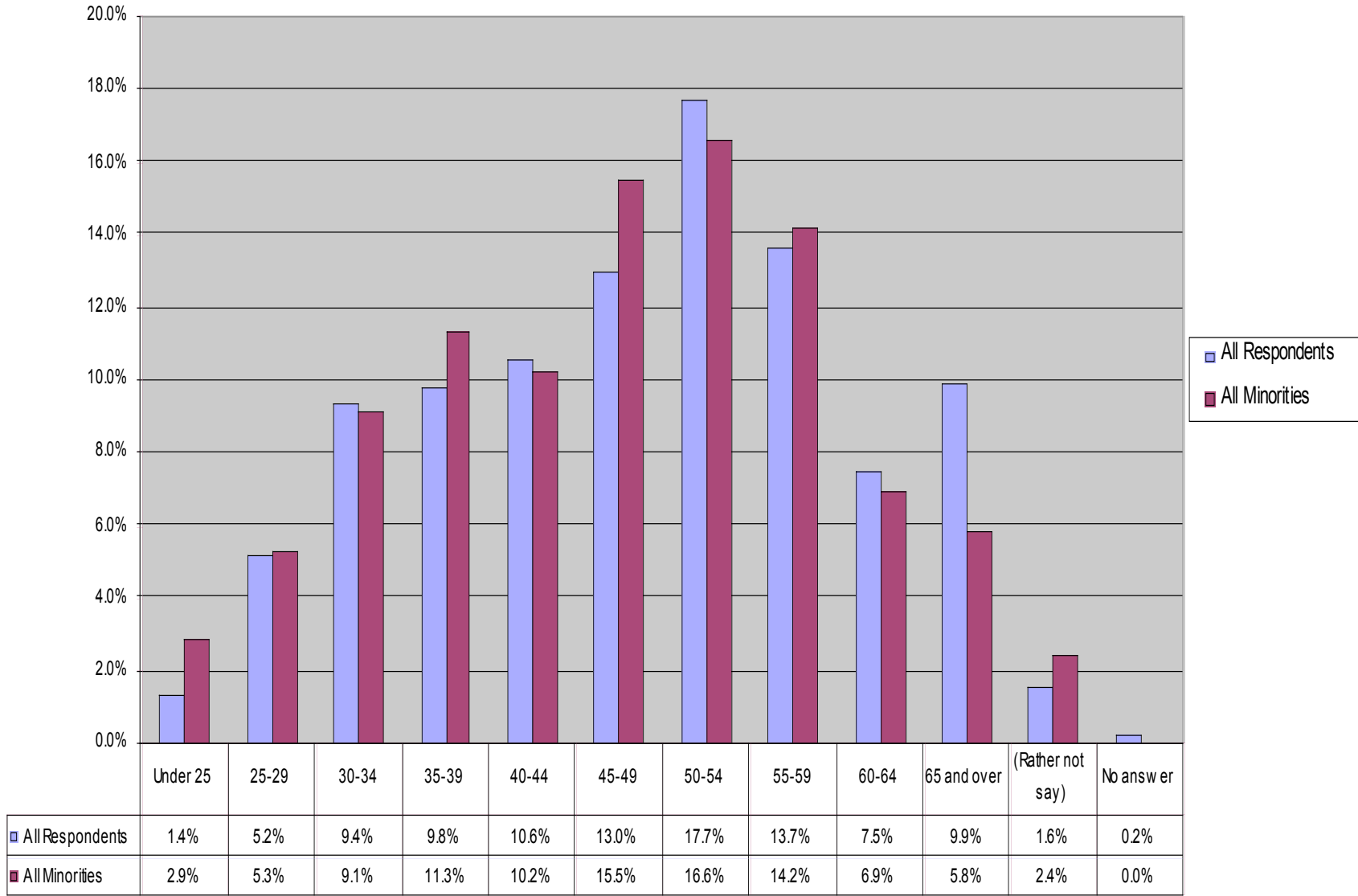
Supervisory Position

Figure 5



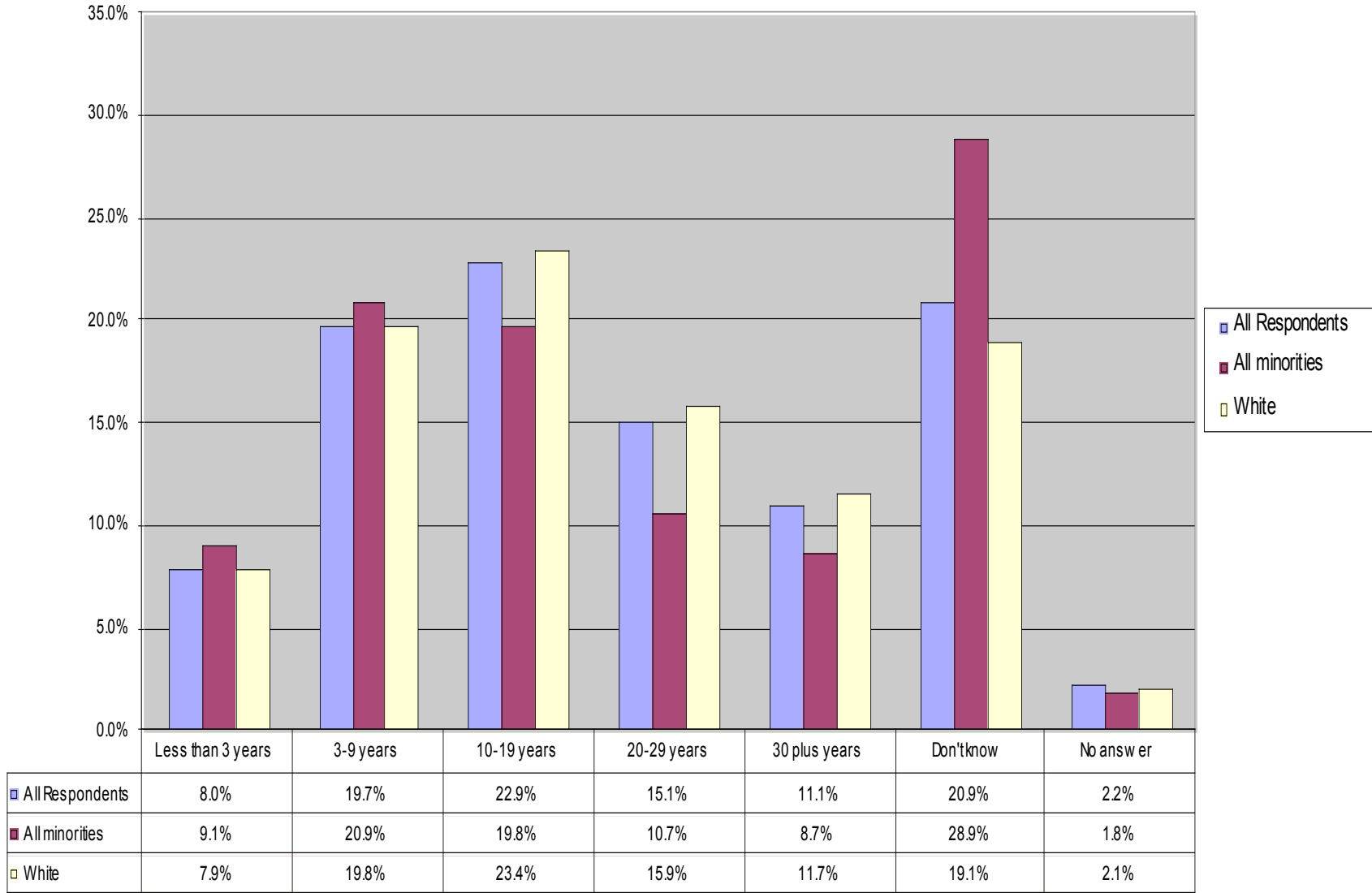
Age

Figure 6



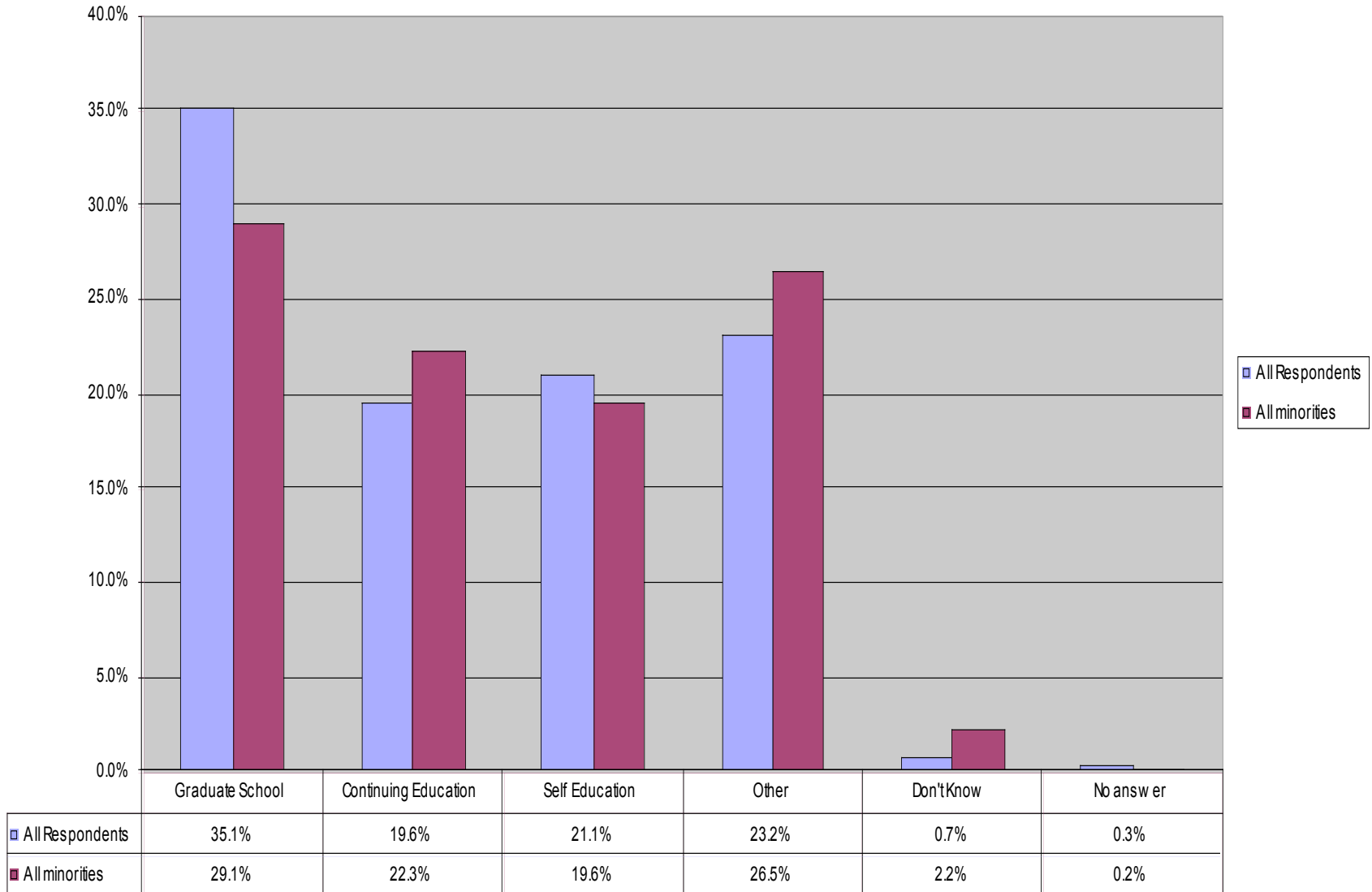
Age at which plan to end career

Figure 7



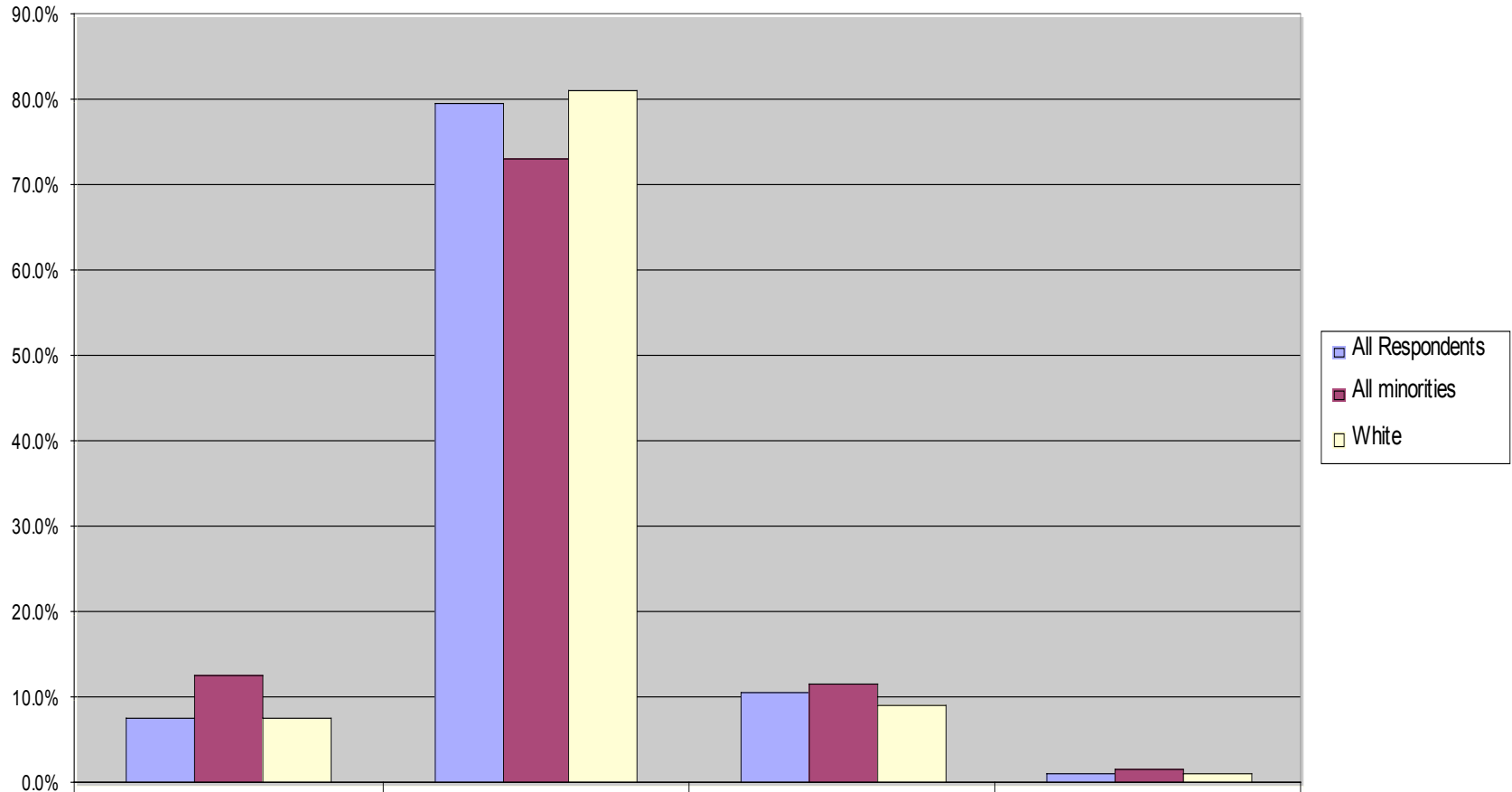
Primary Source of Archival Training

Figure 8



Leaving archival work for new careers

Figure 9



	Yes	No	Rather Not Say	No Answer
All Respondents	8.1%	79.7%	10.7%	1.6%
All minorities	12.8%	73.5%	11.9%	1.8%
White	7.7%	81.5%	9.2%	1.6%