

Research Design Challenges of an Early Career EDI Researcher



Jessica L. Serrao
Metadata Librarian for Digital Collections
Clemson University Libraries
@JessicaLSerrao

SAA Research Forum | 2020 August 5

What We Will Cover

1. The study
2. Early career learning curve
3. Defining and operationalizing EDI
4. Inclusive design
5. Navigating organizational variances
6. Self care and empathy

The Study

Challenges

Defining Equity, Diversity and Inclusion

How to operationalize complex
ideas?

Inclusive Metadata

“Descriptions of digital archival objects that: are fair, equitable, and respectful to all individuals’ intersectional identities and cultures; value diverse experiences and perspectives; strive to create equitable access to the resources they describe; and work to effectively meet the needs of diverse populations.”

Inclusive Design

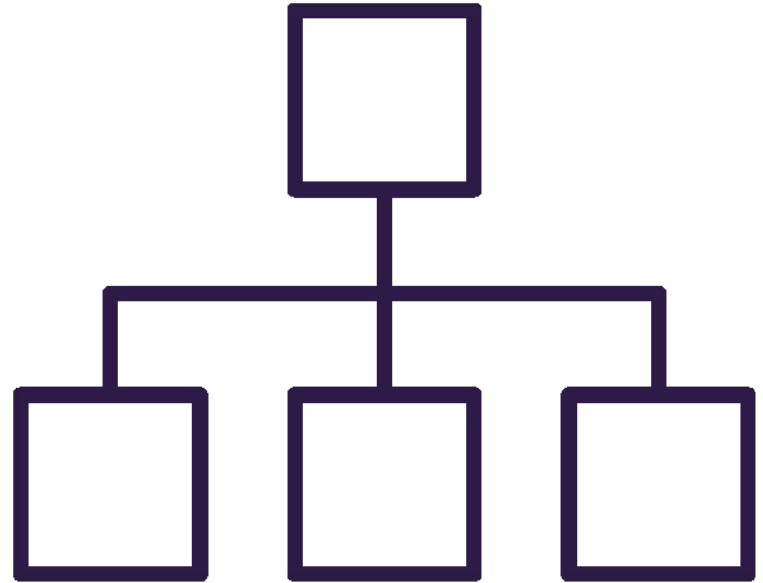
How to create an inclusive sample?



Created by CJS
from Noun Project

Organizational Variances in Archives

Where are the metadata experts?



Created by Stock Image Folio
from Noun Project

Self Care and Empathy



Created by Juraj Sedlák
from Noun Project

Research is not easy.
It can be stressful.
Be empathetic with
yourself and have
patience.



Just as much can be learned from the process as from the results.

Thank you

jserrao@clemson.edu | [@JessicaLSerrao](https://twitter.com/JessicaLSerrao)