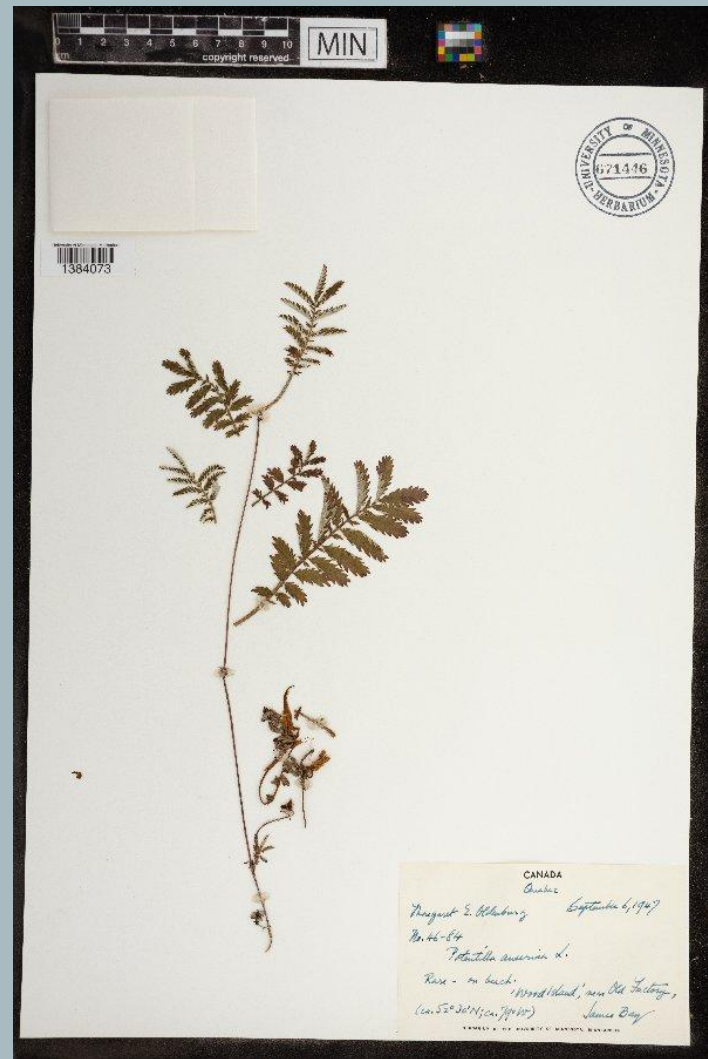


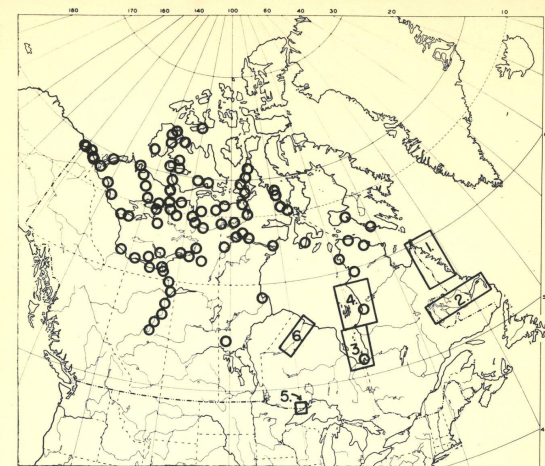
2025 SAA Research Forum

Archival Disconnections In and Across Institutions

Ellen Holt-Werle
University of Minnesota Archives



Work of pioneering Arctic explorer from Minnesota gains new relevance in tracking effects of climate change



- 1 = TORNGAT - KAUMAJET AREA
- 2 = HAMILTON INLET - GRAND RIVER AREA
- 3 = JAMES BAY - TWIN ISLANDS AREA
- 4 = RICHMOND GULF - BELCHER ISLANDS AREA
- 5 = COOK COUNTY, MINNESOTA
- 6 = NORTHWESTERN ONTARIO
- = M.E. OLDENBURG COLLECTIONS



UNIVERSITY OF MINNESOTA
TWIN CITIES

Department of Anthropology
210 Ford Hall
Minneapolis, Minnesota 55455

January 19, 1973

Mrs. Maxine Clapp, Archivist
University Archives
Walter Library
University of Minnesota
Minneapolis Campus

Dear Mrs. Clapp:

The accompanying papers are those of Margaret Oldenburg, a part of whose estate was willed to the University. Miss Oldenburg's Eskimo ethnographic collection has been deposited in the Anthropology Museum collections under Accession No. 735, and some of the papers forwarded to you refer to those ethnographic specimens.

We have examined the papers and have extracted the pertinent information for our Museum files.

If you have any questions, you may contact either Professor Ernst Abbe, Department of Botany, or me.

Sincerely,



Elden Johnson
Chairman

EJ:nh

Questions and/or Contacts re:

- impacts of collections dispersal and the role of archival materials to reconnect for provenance, context, respectful access, use, repatriation

Thank you

Ellen Holt-Werle
holtw006@umn.edu

University of Minnesota Archives