

"Read the dang article":

Archivists' views on AI and peer review

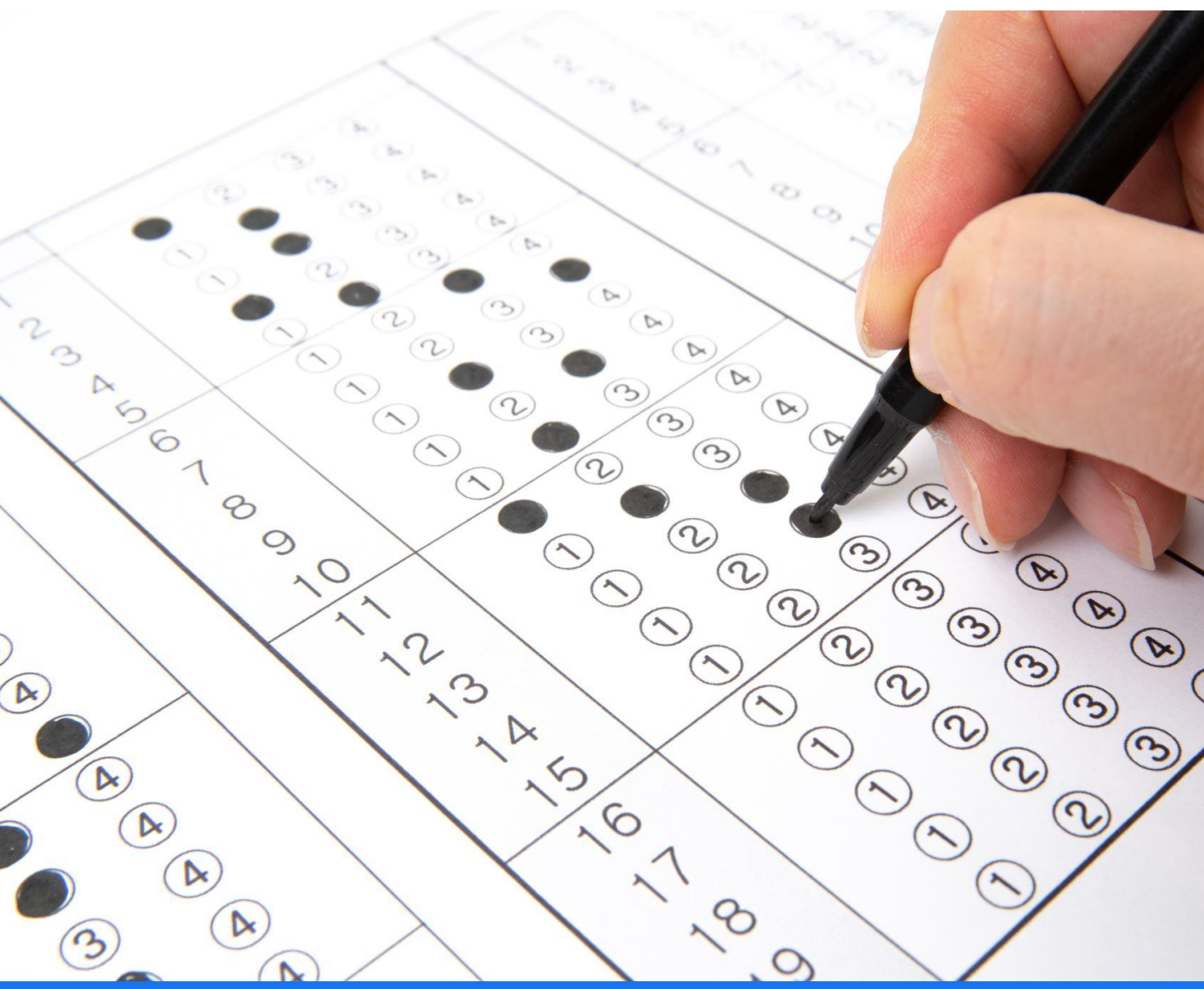
ASHLEY TODD-DIAZ AND ALEX H. POOLE

SAA RESEARCH FORUM, 2025



Background

- Concerns
 - Opacity
 - Bias
 - Inaccuracy, generality, superficiality
 - Methodologically flawed, hallucinated citations
 - Reliability/reproducibility
 - Privacy/confidentiality
 - Accountability
 - Peer review's legitimacy
- Opportunities
 - Initial and final editorial tasks
 - Grammar and style
 - Objectivity
 - Predetermined criteria
 - Rigor and validity
 - Draw upon large corpora for comparison



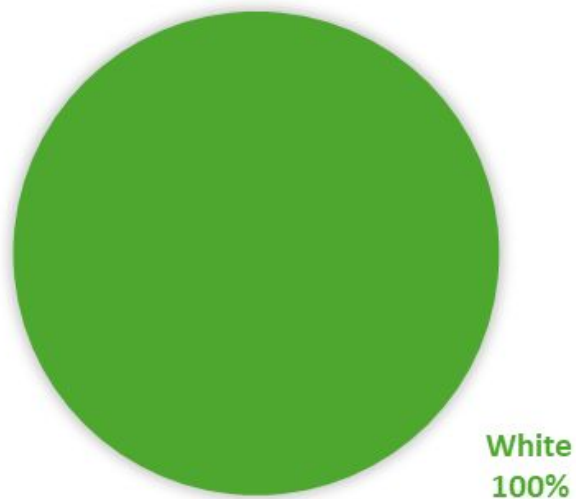
Methodology

- **RQ:** How do information and library scientists engage in AI use and avoidance in the scholarly peer review process?
- Online survey shared with 10 ILS email lists
- Received 252 responses, 127 of which had a completion rate of <60%
- Inductive thematic approach to code open-ended responses, following Braun & Clarke's (2006) six stage approach

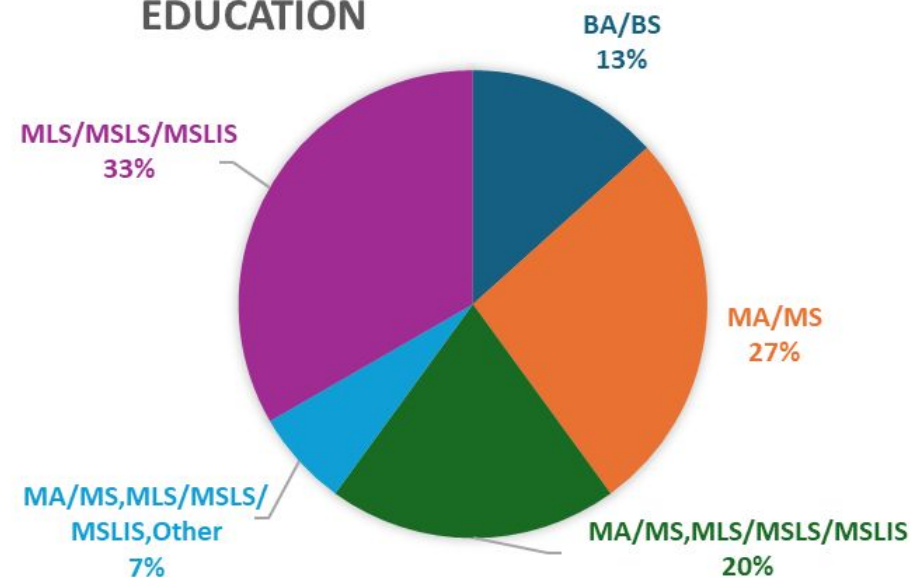
Demographics

15 archivists (12% of total)

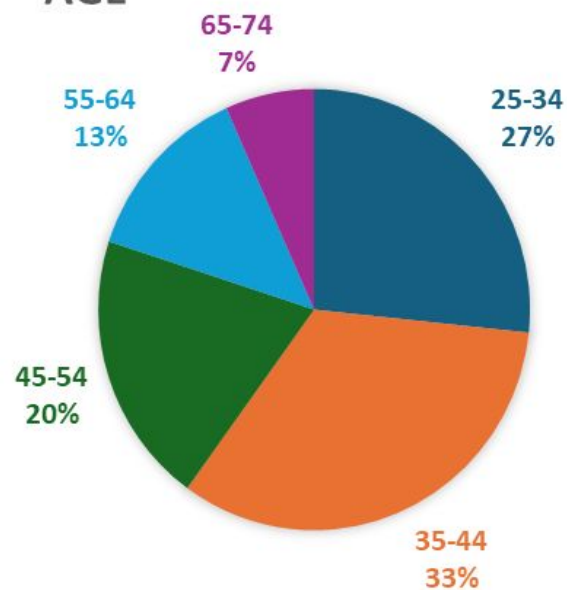
RACE



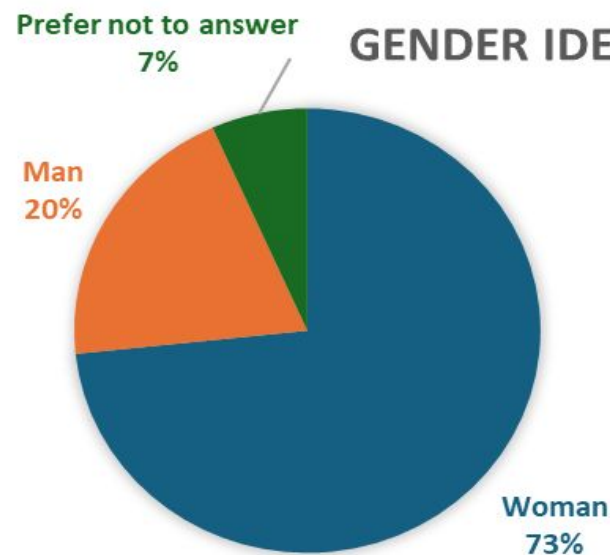
EDUCATION



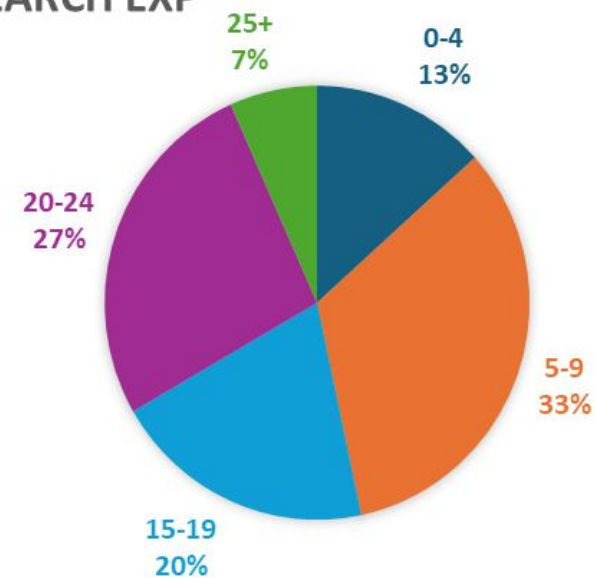
AGE



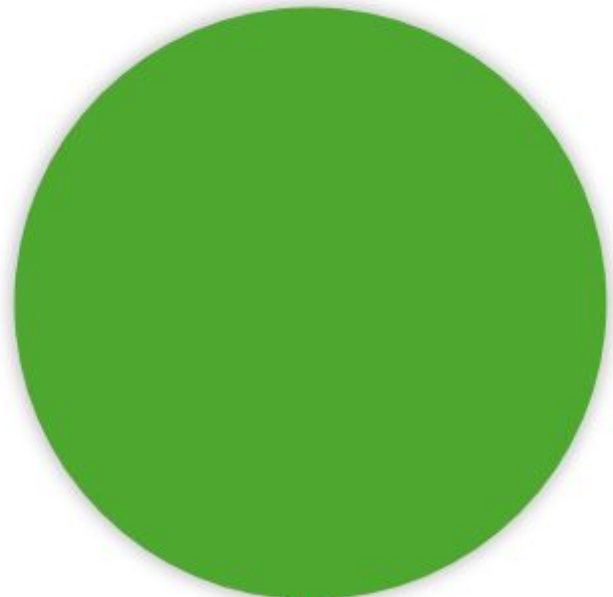
GENDER IDENTITY



RESEARCH EXP



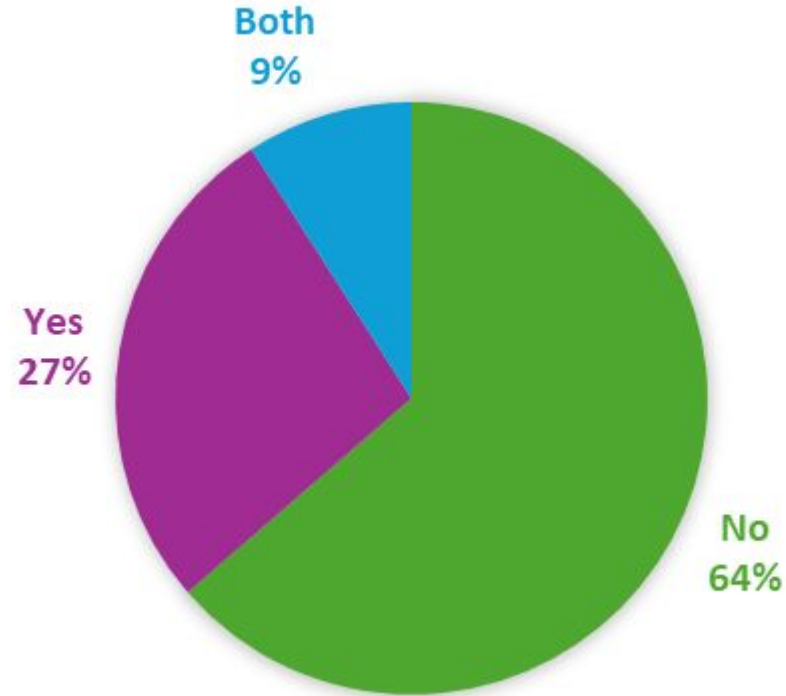
USE OF AI FOR PEER REVIEW



No
100%

n= 13

PERMIT AI USE



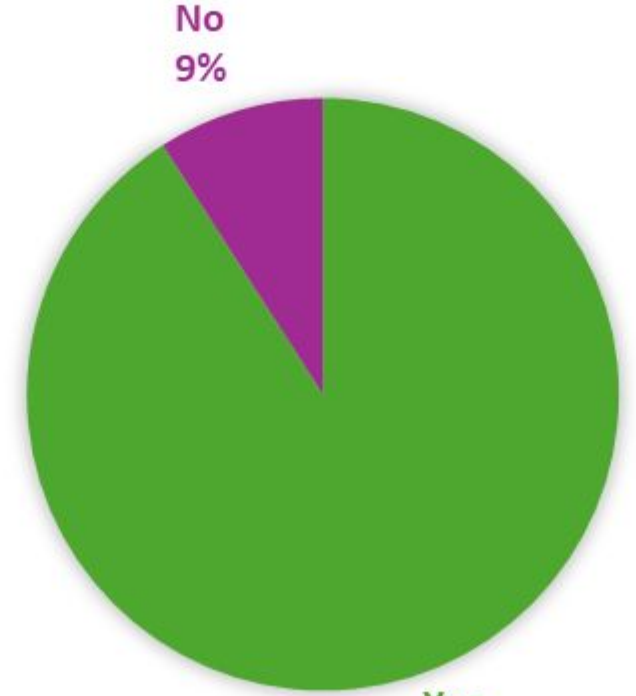
Both
9%

Yes
27%

No
64%

n= 11

EXPLICIT POLICY



No
9%

Yes
91%

n= 11

Archivists, AI, and peer review



Need for oversight

- "Editorial policies should [take a hard stance](#)."
- "I think there is [potential use](#), but we need policies developed."
- "Minimally, guidelines about [what it can and can't be used for](#)."
- "I would like policies to be created for AI use by [authors and peer reviewers](#)."



Environmental advocates

- "The **enormous environmental impact** of AI tools completely negates any possible benefits they might provide. AI tool use should be **heavily limited** until their environmental impact can be reduced."
- "The technological infrastructure required to run AI is **highly destructive to the earth**. There is no such thing as ethical use of AI."
- "I would like people to realize that AI is **damaging to the environment** and to one's creative process."
- The **sheer energy consumption**. Higher ed has access to writing services that are FAR less environmentally harmful."



Importance of humans

- "AI will not understand **nuance and local cultural information** easily."
- "I find the process of engaging with another scholar's work to be meaningful. It's kind of **important to my identity as a human being** to believe that I can offer something, from my experience as a professional and an author, that a bot cannot."
- "We should **not be relying on non-humans to do human work.**"
- "I'm not convinced generative AI adds any value; rather, it **cheapens the discourse.**"

Visceral response

- "Read the dang article... Why even have human reviewers if they are going to rely on AI?"
- "I would like for AI to be eradicated as much as possible. Yes I have concerns."
- "I see people taking advantage of tools so that they do not have to be creative and do the work. AI encourages laziness."



Discussion

- Consistent reported avoidance of AI
- Rules and structure
- A focus on humanity, culture, and context
- Keen awareness of the lasting impact of today's actions
 - Environment
 - Scholarly enterprise
- More research is needed into:
 - Best practices for AI use in peer review
 - Diffusion of AI use
 - Affective response
 - Cognitive dissonance





Thank you!