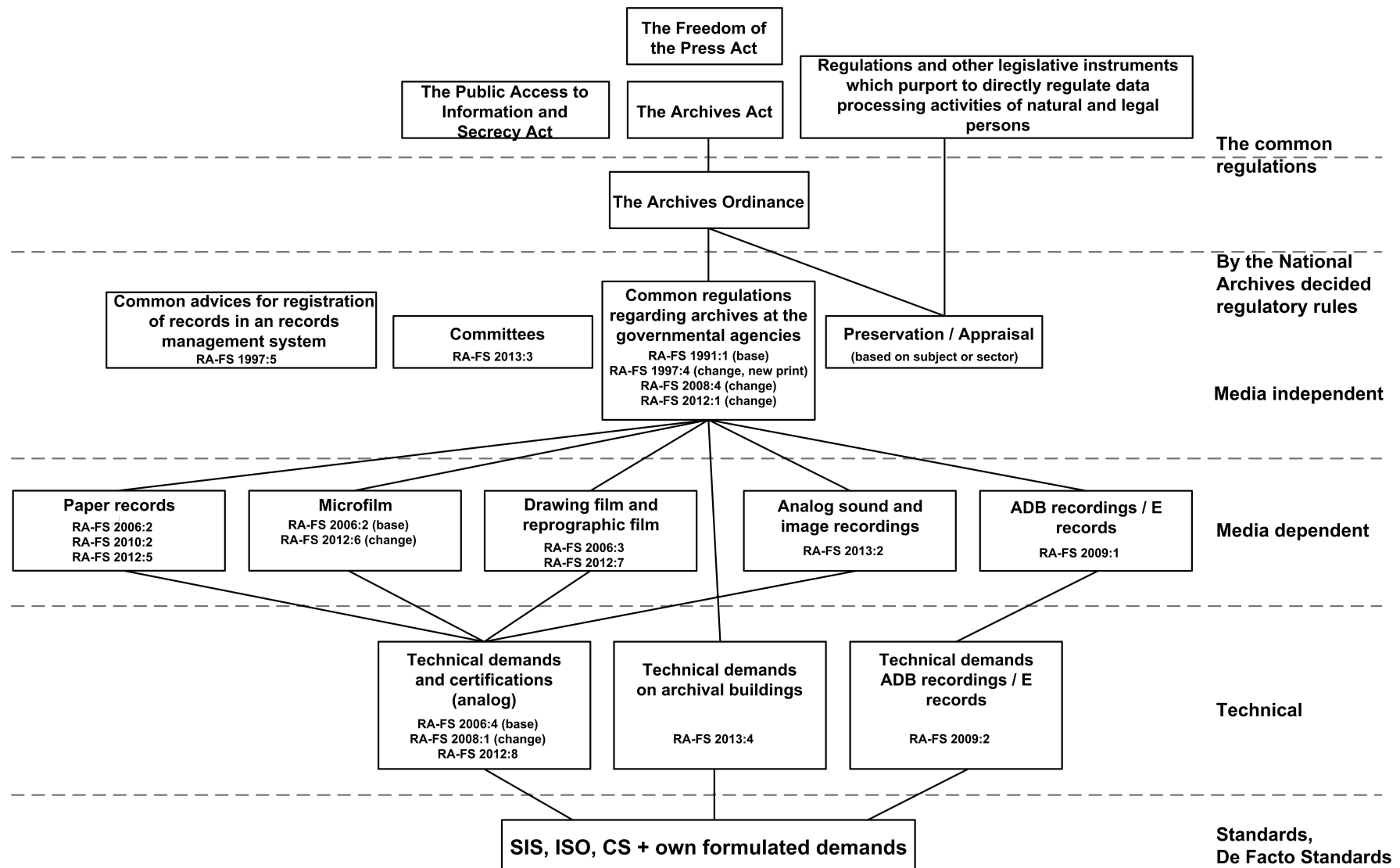


An update on Swedish Common Specifications FGS:er

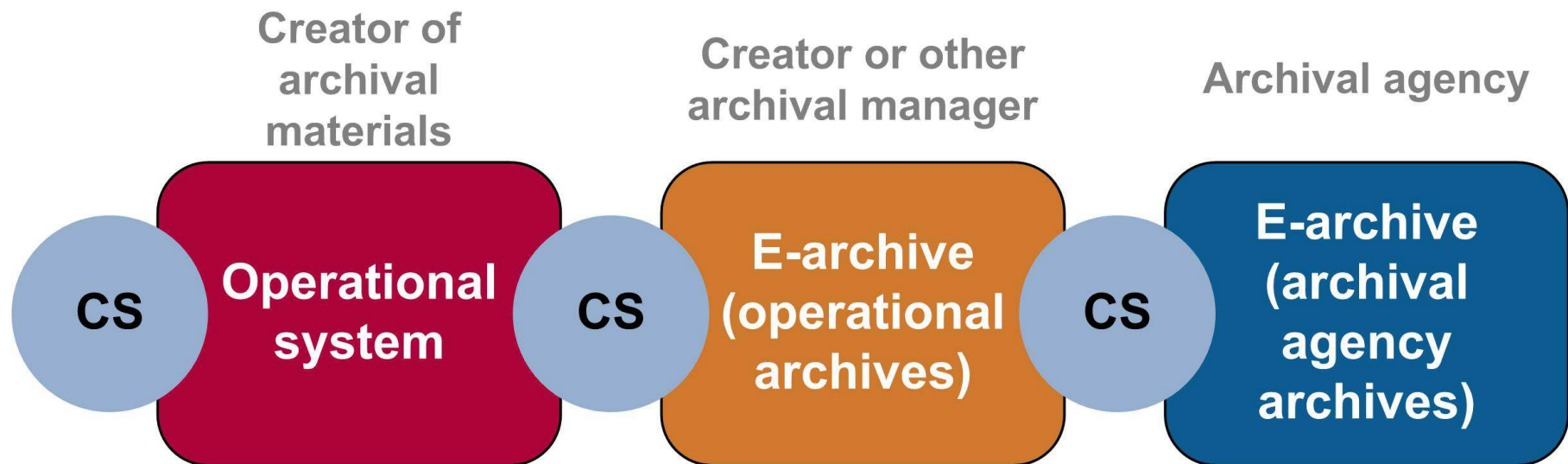
Karin Bredenberg, 2015-08-20
Bachelor of Science in Computer Engineering
Technical advisor, metadata
Responsible for CS development



All laws and regulations affecting the work



Riksarkivet

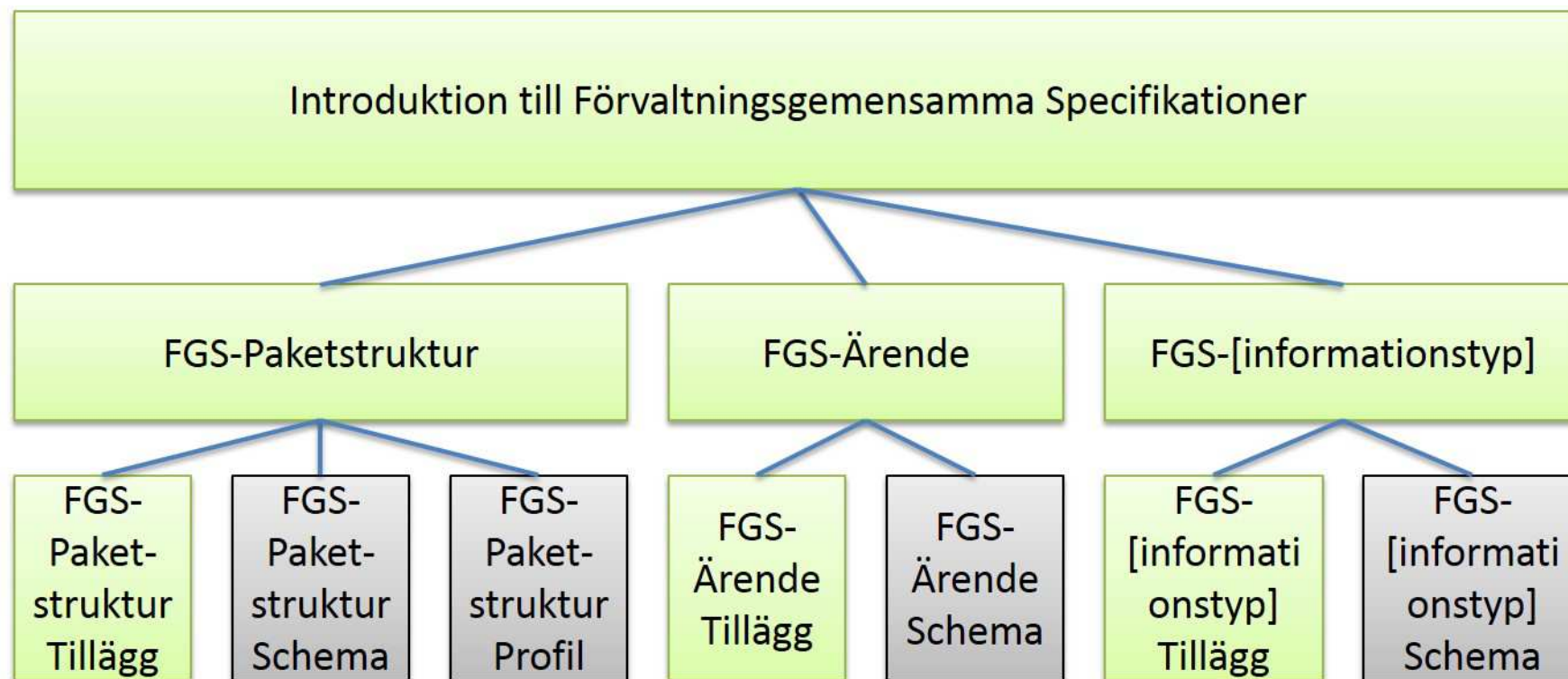


CS is demands of metadata for the information and packaging of the information in Information Packages (IP)



Document hierarchy

The most important document of it all is the guidance document which describes how a CS is developed, maintained and implemented (not shown)



Lowest level is amendment (pictures, valuelist explanations and more) and the actual XML-schema/schemas



Riksarkivet

Publication

Specifications: <http://riksarkivet.se/fgs-earkiv>

XML-schema: <http://xml.ra.se/e-arkiv/>

Managment

- At place:
 - A function in the Public Information Management section of the Swedish National Archives:
 - One expert of metadata who at the same time is responsible for the CS work (at place)
 - One administrator (missing)
 - A half person spreading the word (lost)
- A management board
- References groups as needed
- Working groups or sub projectes as needed



What has happened?

- 16th of February final report delivered from project eARD, so project ended then.
- New document hierarchy as shown
- The CS for packages has been finished and published in first version on the 15th of August (or actually 14th....)
- The European project EARK, <http://www.eark-project.com/> uses CS Package and the document hierarchy
- Handling questions where the answer is no:
 - Education in XML and CS
 - Checking information models and developed services
 - Supply and develop open source code
 - Build the wanted e-archive solutions
- Agency assignment to aid the Swedish Service Agency with e-archiving as a service. (Use of CS's, archival law understanding and aiding pilot agencies)



Riksarkivet

Thank you for the attention!

Karin Bredenberg

Technical advisor, metadata
Responsible for CS development

karin.bredenberg@riksarkivet.se